

THE RIGHT WAY TO SEPARATE WASTE



Non-recyclable waste

Coal ash (cold)
Lead glass
Felt-tip pens
Light bulbs, rubber
Hygiene articles
Cat litter, sweepings, candle remnants, ceramics
Porcelain
Vacuum cleaner bags, mirrors
Wallpaper remnants, clay pots
Dressings
Nappies
Cigarette butts and ash (cold)



Organic waste

Wrap damp waste in newspaper or kitchen paper.

Bags made of bioplastics and "compostable plastics" may NOT be thrown in the bin for organic waste!

Tree branches
Leftover bread
Eggshells
Garden waste
Fruit and vegetable waste
Hedge clippings
Coffee grounds and tea leaves (with filters/bags)
Kitchen waste
Leaves
Grass clippings
Peelings
Food leftovers
Shrubs



Paper + cardboard

Please tear boxes apart or unfold them so that they lie flat.

Document folders (made of cardboard)
Envelopes
Books
Computer paper
Egg boxes
Cardboard packaging
Catalogues
Paperboard
Brochures
Newspapers
Magazines



Packaging Plastics Metals

Packaging and other objects made of metal, plastic or composites are collected in the yellow recycling bins/yellow recycling sacks.

Plastics

Toothpaste tubes
Shampoo bottles
Toys
Plastic buckets
Flower pots
Watering cans
Foil
Foam

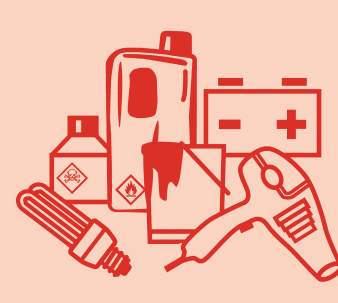
Metals

Pots
Pans
Cutlery
Nails
Screws
Tools

Composites

Drink cartons
Milk cartons

Order a free recycling bin: Brockmann Recycling GmbH, tel. +49 (0)4191 8181



Hazardous waste

All hazardous waste must be collected and disposed of separately.

Waste oil
Asbestos, asbestos cement sheets (packed in foil)
Batteries
Corrosive fluids
Chemicals
Electric stoves¹
All kinds of electrical and electronic equipment
Energy-saving bulbs
Paints
Hairdryers
Fridges¹
Varnishes
Fluorescent tubes
Razors
Cleaners
Dryers/tumble dryers¹
Washing machines¹

¹ Can also be collected on request (tel. +49 (0)40 535 95 800)

**Recycling centre
City of Norderstedt, Municipal Services**

Friedrich-Ebert-Strasse 76

**Mon.-Fri.
9 a.m.-4 p.m.
Sat. 8 a.m.-12 noon**



Textile container*

Clothing
Curtains
Duvets
Fabric remnants
Shoes (in pairs)

Textiles & shoes

Hempels Gebrauchtwarenhaus (second-hand store)

Stormarnstraße 34-36
www.hempels-norderstedt.de
You will also find information about opening hours here.

Clean, wearable clothing and shoes (bundled in pairs) which are as good as new and can be sold on without further processing.

Please pack in bags or sacks!



Glass*

Please separate clear and coloured glass. Energy-saving light bulbs, standard light bulbs, window panes, mirrors, ceramics, porcelain and stoneware may not be disposed of in glass containers.

Vinegar and oil bottles
Juice bottles
Champagne and wine bottles
Fruit and vegetable jars
Mustard and sausage jars

*Please use the recycling points in the city; you will find information about locations at www.betriebsamt-norderstedt.de.

This list is not exhaustive.